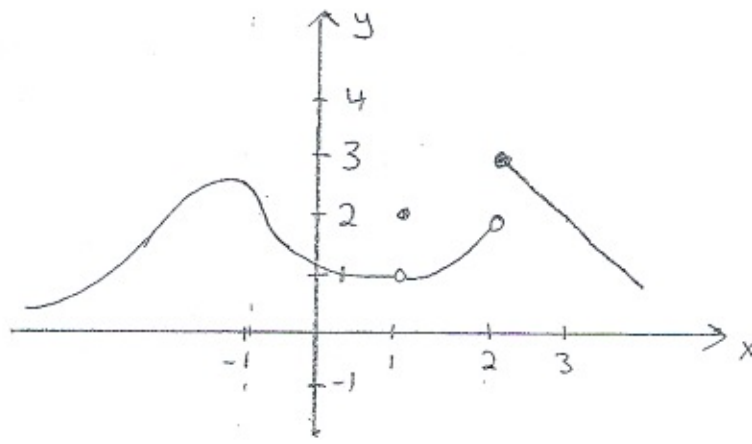


Worksheet #2

Name _____

PID _____

β) Compute the limits, if the graph of $y = g(x)$ is given as follows,



a) $\lim_{x \rightarrow -1} g(x)$

b) $\lim_{x \rightarrow 1} g(x)$

c) $\lim_{x \rightarrow 2} g(x)$

2) Define

$$f(x) = \begin{cases} x^2 - 1 & \text{if } x \leq 2 \\ x + 1 & \text{if } x > 2 \end{cases}$$

Compute the following limits or explain why they don't exist:

a) $\lim_{x \rightarrow 2^-} f(x)$

b) $\lim_{x \rightarrow 2^+} f(x)$

c) $\lim_{x \rightarrow 2} f(x)$