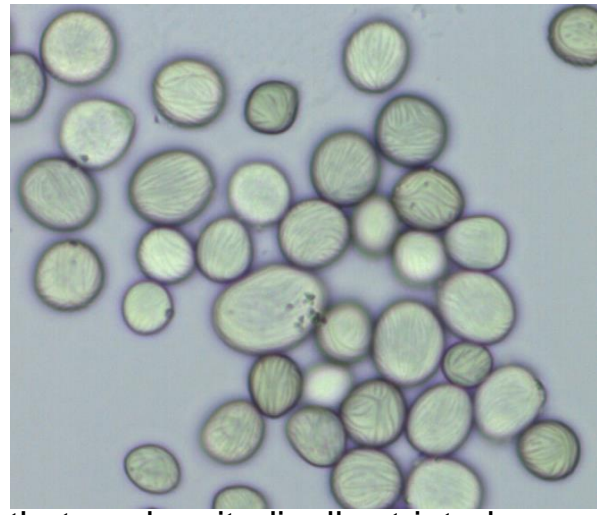
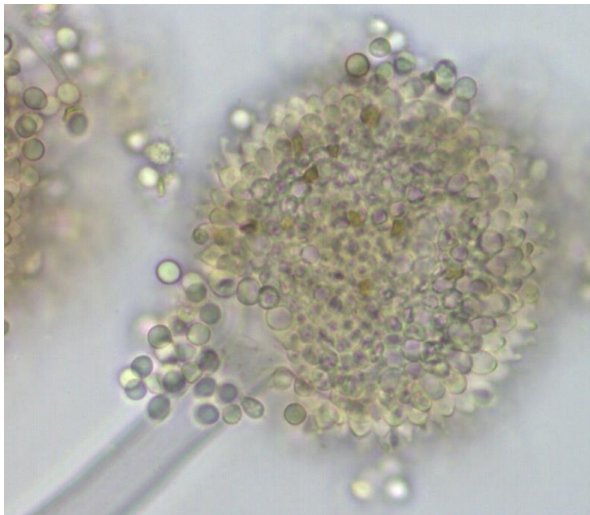
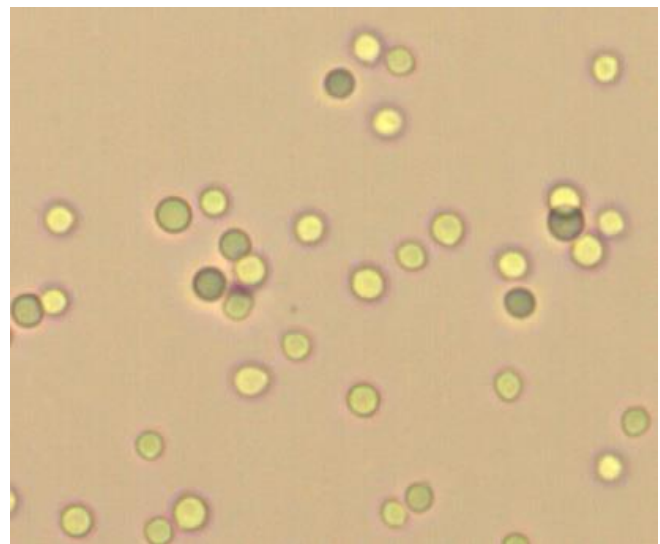
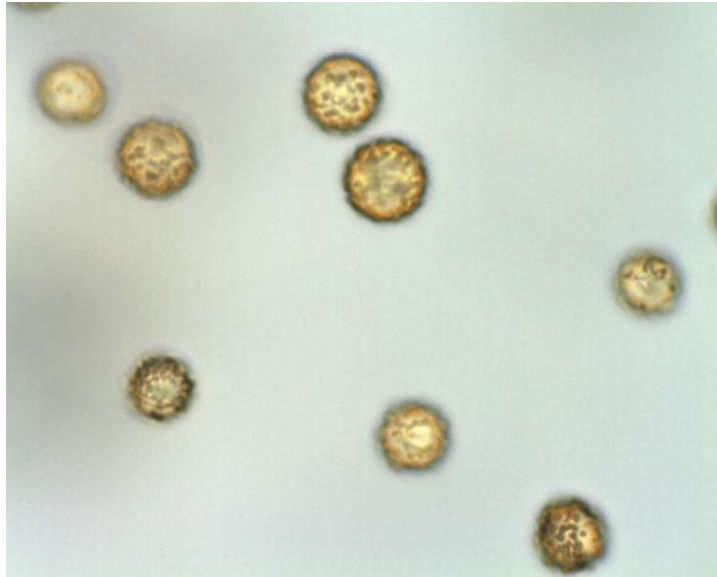


Part I. Fungal Reproductive Structures and Spores

Rhizopus sp. with ovate spores that are longitudinally striated.



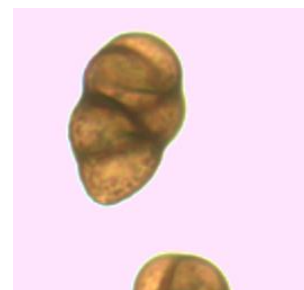
Penicillium sp. with smooth globose spores.



Harzia sp.; spores are globose and echinate.



Curvularia sp.; spores that are obovate and septate.



Ulocladium sp.; spores are oval and septate.

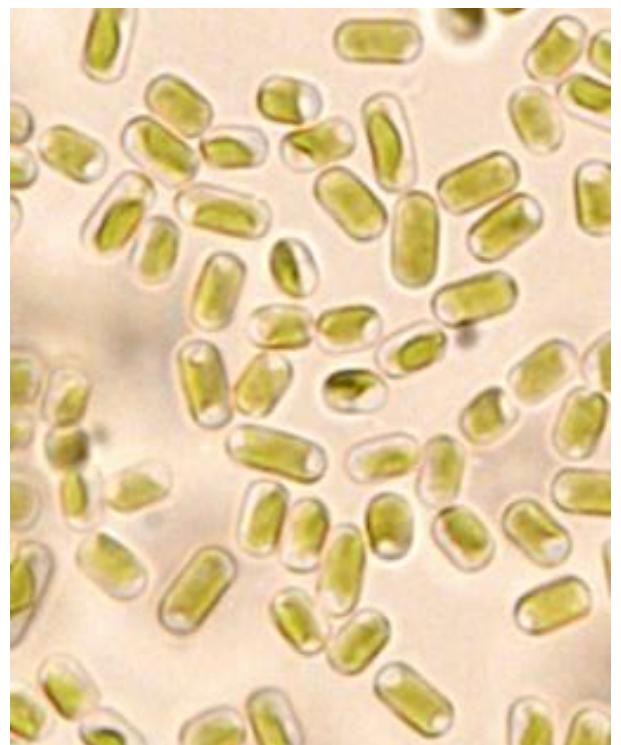
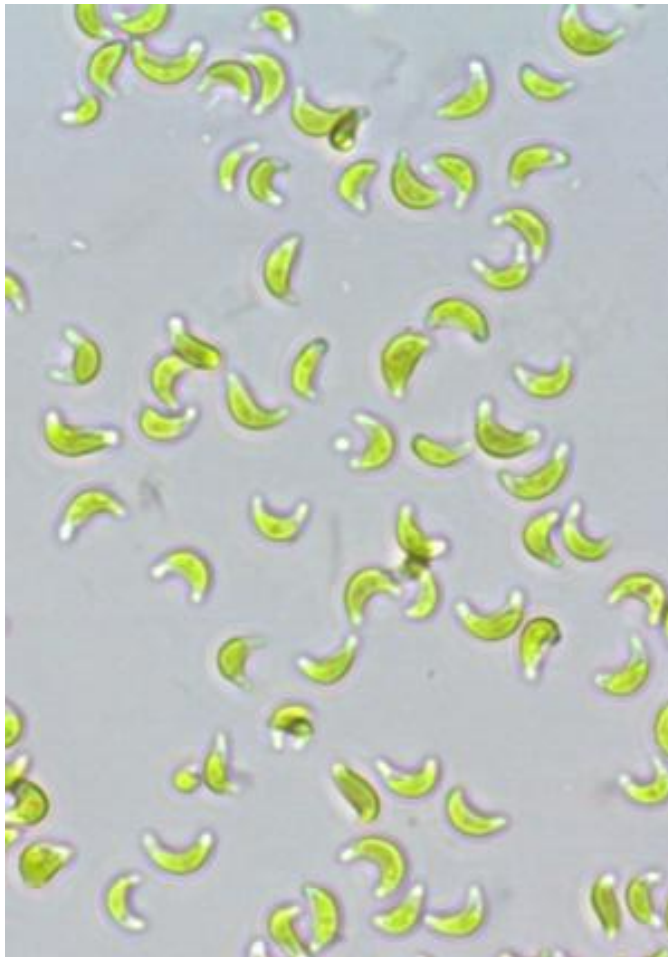
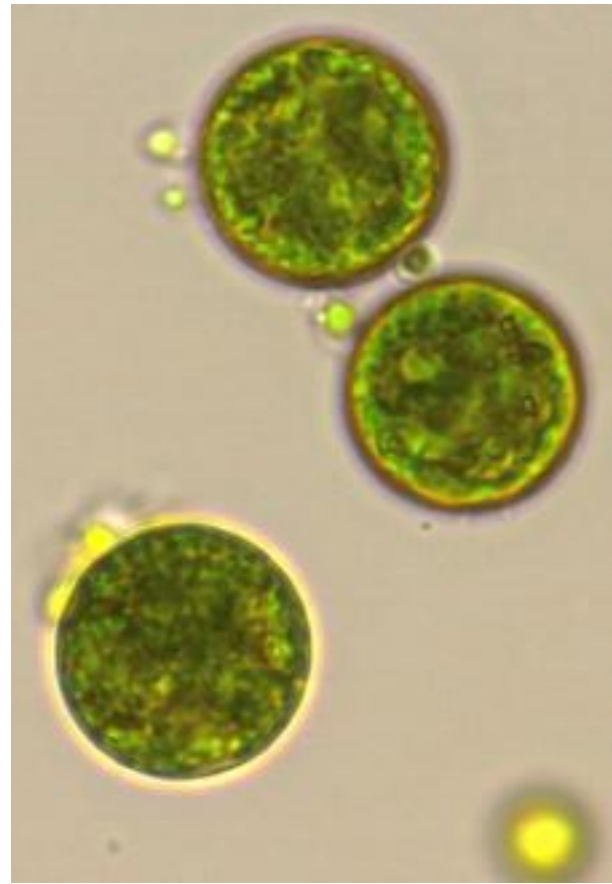


Fusarium sp.; spores are curved fusiform and septate.

Part II. Algal Images; DIATOM PLATES



Part II. Algal Images; GREEN ALGAE PLATES



Part II. Algal Images; CYANOBACTERIA PLATES

