

Name: _____

Offline HW 2

This offline assignment is due **Tuesday, January 23**. No extensions will be given.

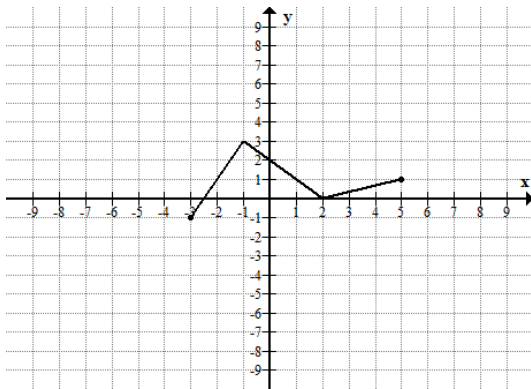
The overall look of your paper will count toward your grade. Please graph the function on the grid provided below. **Submissions on other paper will not be graded.**

You must graph the functions neatly and accurately BY HAND! ("Accurately" means that the graph passes through the points that satisfy the equation, not just have a general shape of the family of functions to which it belongs. For example, the graph of $y = x^2$, should be a parabola that passes through $(0,0)$, $(\pm 1,1)$, $(\pm 2, 4)$ not any other parabola shape)

This must be **YOUR work**; you are not allowed to ask tutors, friends or family members for help. You CAN however consult with your classmates. If you choose to do so, each of you must submit a separate paper and the name of the person(s) with whom you collaborated must be written on this paper. The papers that are **suspiciously identical will receive 0 credit.**

The graph of a function $f(x)$ is given below. Use transformations to graph $y = 3f(-x + 2) - 4$. List the transformations needed (use proper names!) and graph each intermediate graph on the grid provided. Be accurate!

1) original function $y = f(x)$

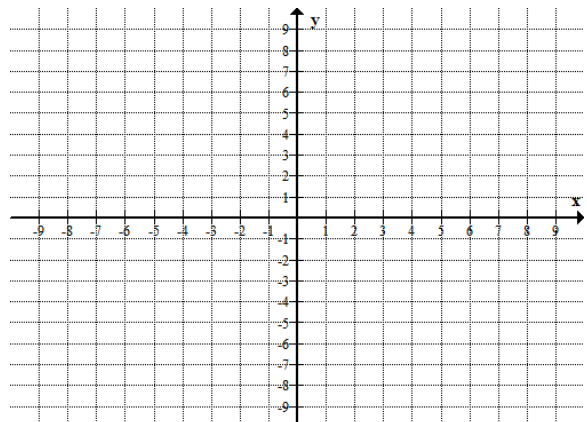
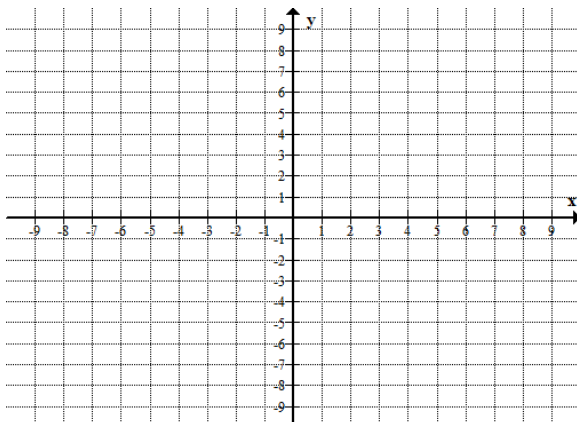


2) Transformation: _____ ;

Equation: _____

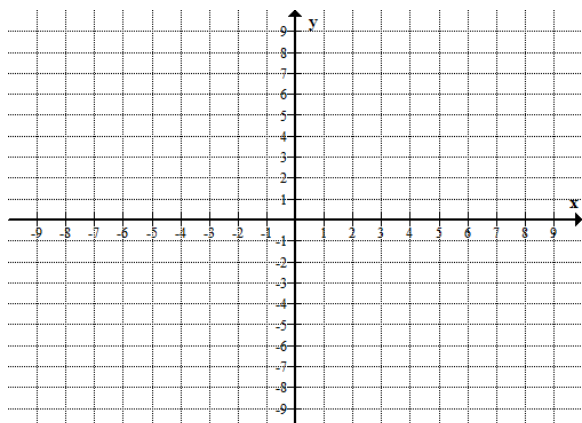
3) Transformation: _____

Equation: _____



4) Transformation: _____ ;

Equation: _____



5) Transformation: _____

Equation: _____

