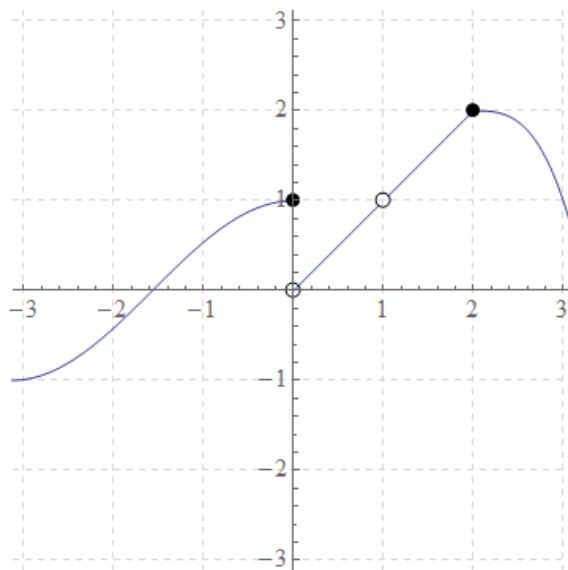


No calculators are allowed on this quiz. Please read each question carefully, follow directions and clearly mark your solutions. **Show your work for full credit.**

1. (4 points) For the function $f(x)$ graphed below, find the following (justify your answer if the limit does not exist)



(a) $f(1)$

(c) $\lim_{x \rightarrow 0} f(x)$

(b) $\lim_{x \rightarrow 1} f(x)$

(d) $\lim_{x \rightarrow 2} f(x)$

2. (6 points) Find the limits:

(a) $\lim_{x \rightarrow -1} \frac{x^2 - 1}{x + 1}$

$$(b) \lim_{x \rightarrow \infty} \frac{2x - 5}{x^2 + 3}$$

$$(c) \lim_{x \rightarrow \infty} \frac{1}{x}$$

$$(d) \lim_{x \rightarrow 4^+} x - \sqrt{x}$$