

# Tokyo Buildings in Section

Study Abroad Japan Seminar

Gray Read

These drawings merge photographs with sectional drawings to show how the buildings interact with people and place. Life flows through and around them. The sections show the shape of experienced space and how the buildings form the threshold between inside and outside.

Yokohama International Terminal  
OMA

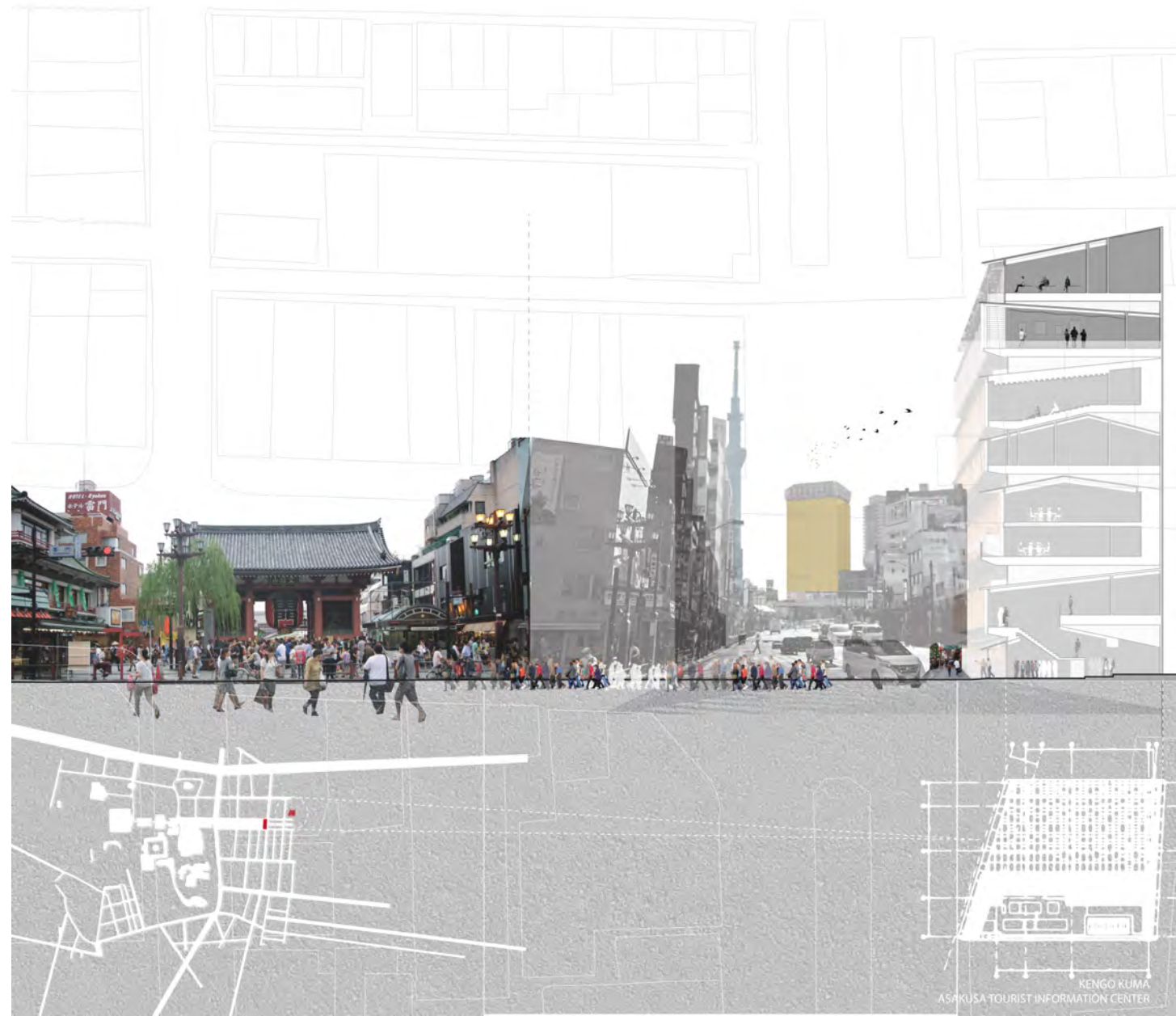
Drawing by: Paula Castel

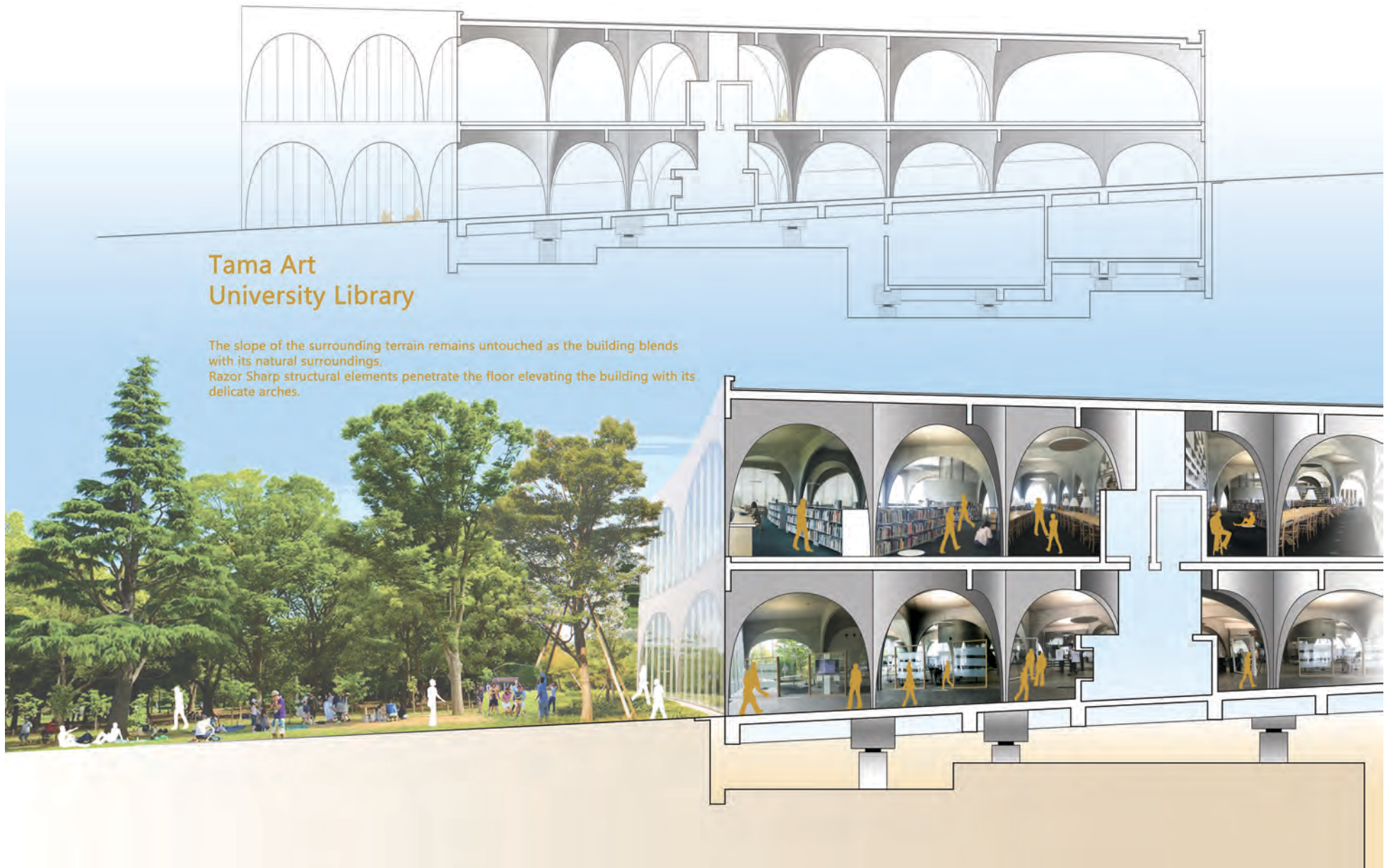


Asakusa Tourist Information Building  
Kengo Kuma  
Drawing by: Richard Salinas



Asakusa Tourist Information Building  
Kengo Kuma  
Drawing by: Maria Perez





## Tama Art University Library

The slope of the surrounding terrain remains untouched as the building blends with its natural surroundings. Razor Sharp structural elements penetrate the floor elevating the building with its delicate arches.

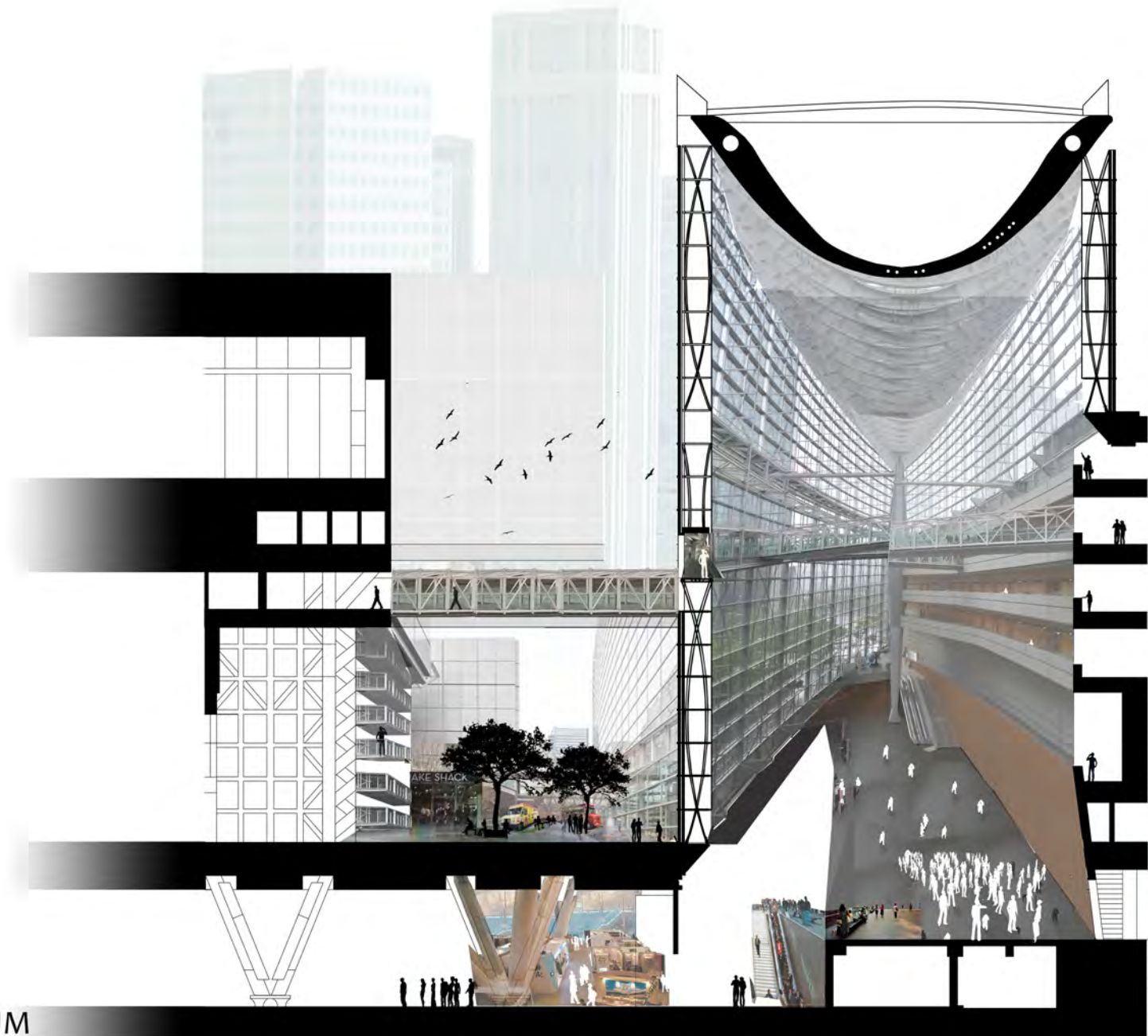
Tama Art University Library, Toyo Ito

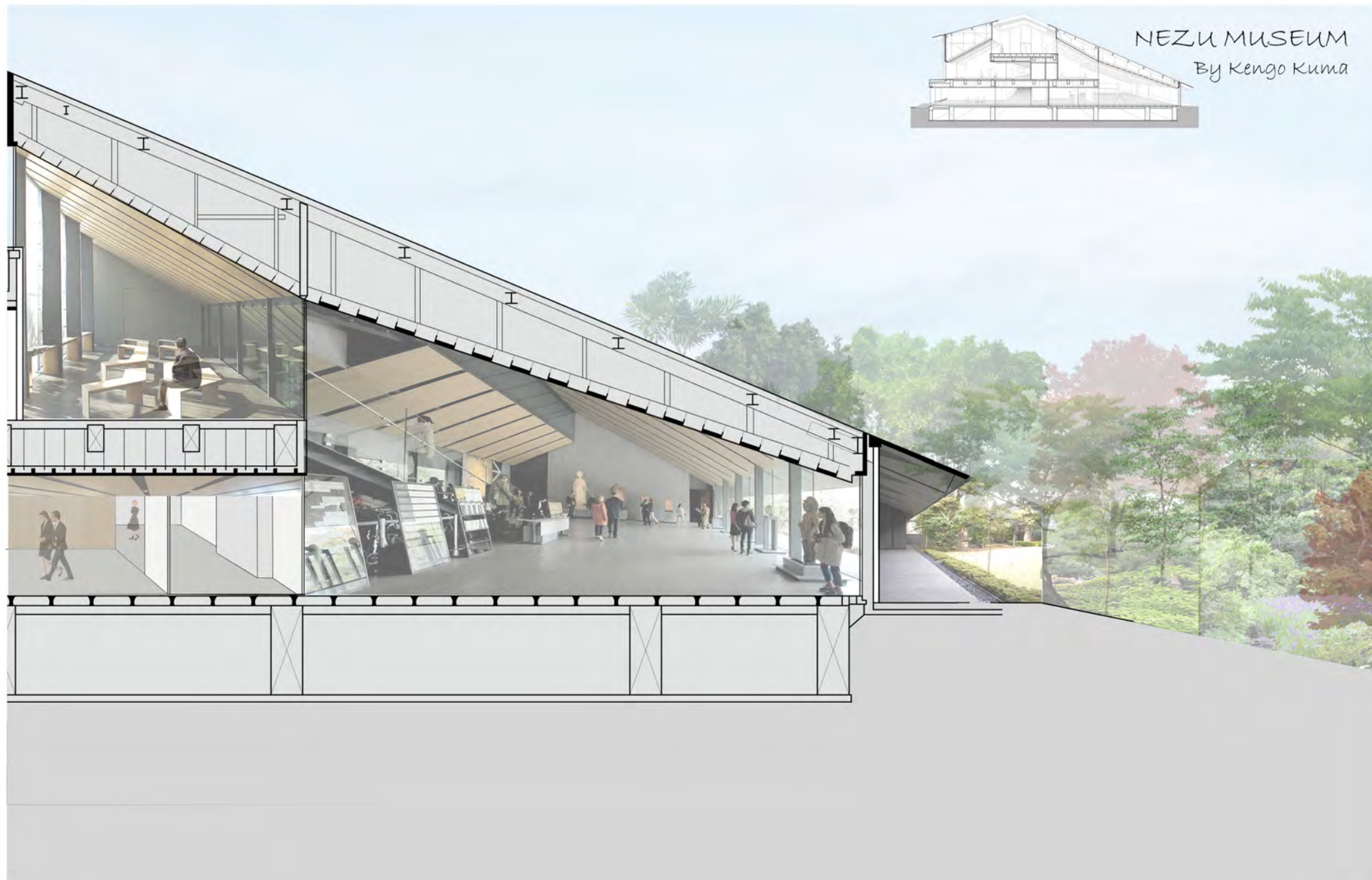
Drawing by: Elmer Garcia

Tokyo Forum  
Rafael Viñoly

Drawing by:  
Jorge Milla

TOKYO FORUM





Nezu Museum, Kengo Kuma

Drawing by: Anna Duque



THE SLOPE OF THE ROOF STRUCTURE SEEMS TO CONTINUE WITH THE SLOPE OF THE GARDEN, CREATING A RELATIONSHIP BETWEEN THEM.

NEZU MUSEUM  
VALENTINA CATALANO



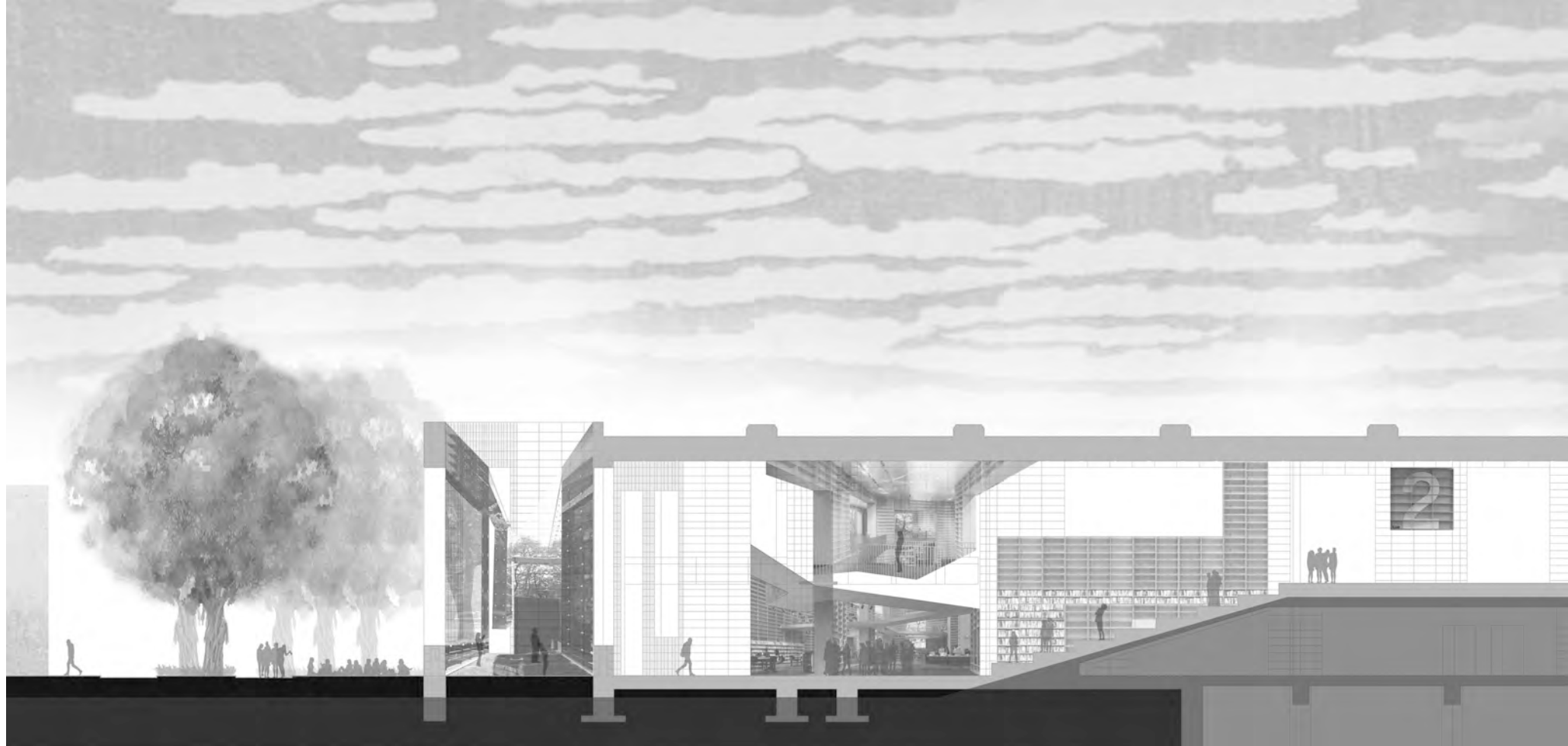


Jodelle- E. Theronier  
Omotesando Hills by  
Tadao Ando

*The relationship of the circulation between the street and Building Omotesando Hills is a counterpart of the street, where the flux in the building is following the street.  
"Flux Management refers to the forms which cut across urban, architectural and climatic realms." - Atelier*

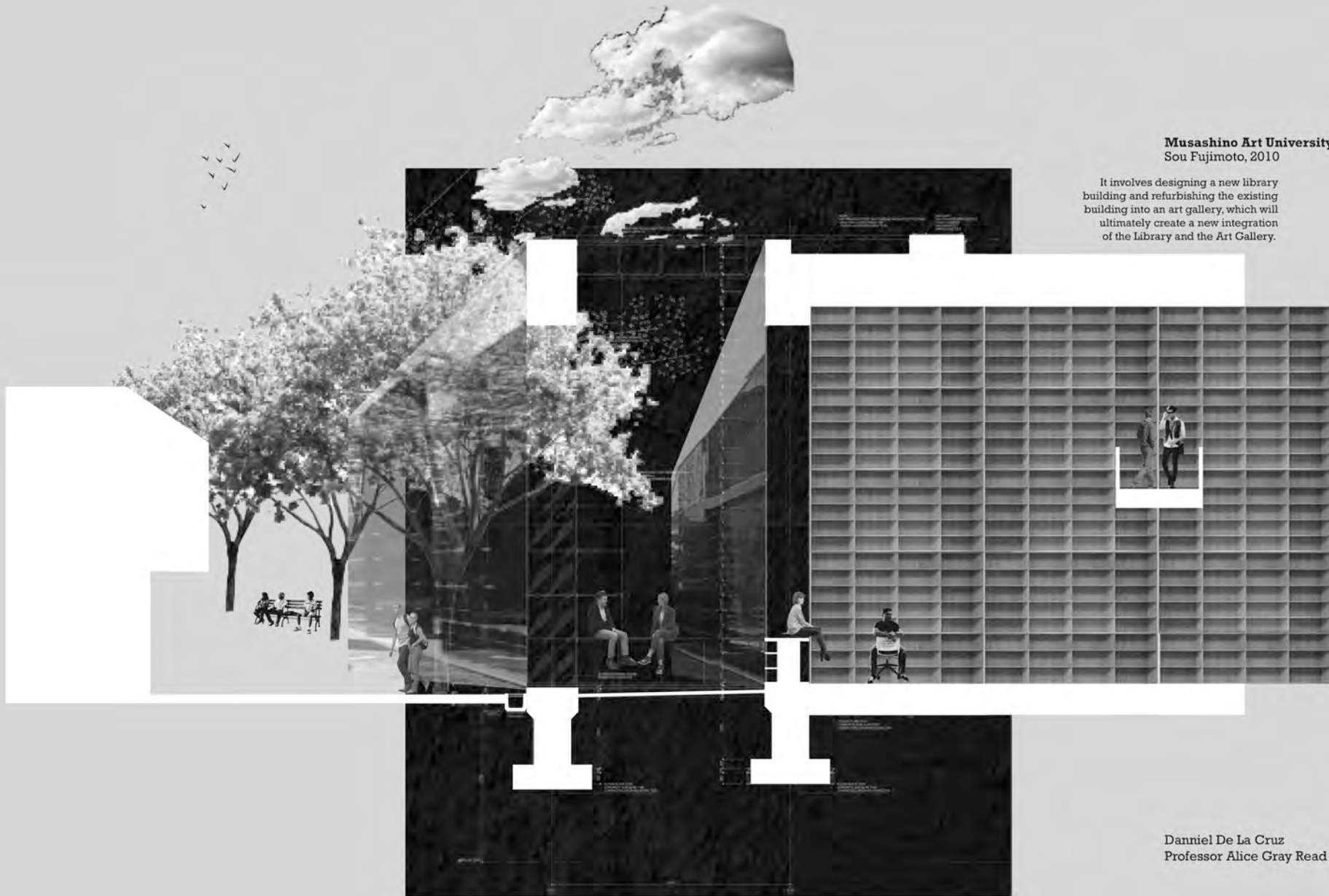
Omotesando Hills, Tadao Ando

Drawing by: Jodelle Theronier



### *MUSASHINO LIBRARY*

THE CIRCULATION OF THE MUSASHINO LIBRARY STARTS FROM THE EXTERIOR, WHERE NATURE AND ARCHITECTURE CO-EXIST TO PREPARE THE VISITORS OR STUDENTS FOR THE AMBIANCE OF THE SACRED SPACE. THE INNER SPACES OF THE LIBRARY ARE DEFINED STARTING FROM THE ENTRANCE, WHERE ONE HAS SEVERAL OPTIONS TO EXPLORE OR INHABIT SPACES. ONCE A VISITOR REACHES THE MAIN STAIRS, HE OR SHE HAS THE OPPORTUNITY TO EXPLORE THE SPACES BESIDE THE STAIRS OR CONTINUE GOING UPWARDS, WHERE ONE CAN FULLY EMBRACE THE LIBRARY AT ITS CORE.



**Musashino Art University Library**  
Sou Fujimoto, 2010

It involves designing a new library building and refurbishing the existing building into an art gallery, which will ultimately create a new integration of the Library and the Art Gallery.

Daniel De La Cruz  
Professor Alice Gray Read

Musashino Art University Library, Sou Fugimoto

Drawing by Daniel de la Cruz

Prada Store,  
Herzog & deMeuron

Drawing by: Monica Portugal



## PRADA

The Prada store by Herzog & deMeuron allows visibility to different levels of the building from the exterior, in this way creating a relationship between inside and outside- the shoppers and pedestrians. The slanted sidewalk serves as an invitation to sit down or to stop walking and take a look at the building and its interior.



Prada Store,  
Herzog & deMeuron

Drawing by: Natalia Llamas

Tokyo National Art Museum  
Kisho Kurokawa

Drawing by: Sophia Cabral





This section is to highlight the connection between exterior space and interior space. This space is wide open to the outside elements only being separated by the boundary of the doors and the stairs. Which the stairs are useful for outside sitting and enjoying the views of passersbys.

Omar Dimiati  
Professor Read  
Deus Ex Machina Cafe

Deus Ex Machina Café

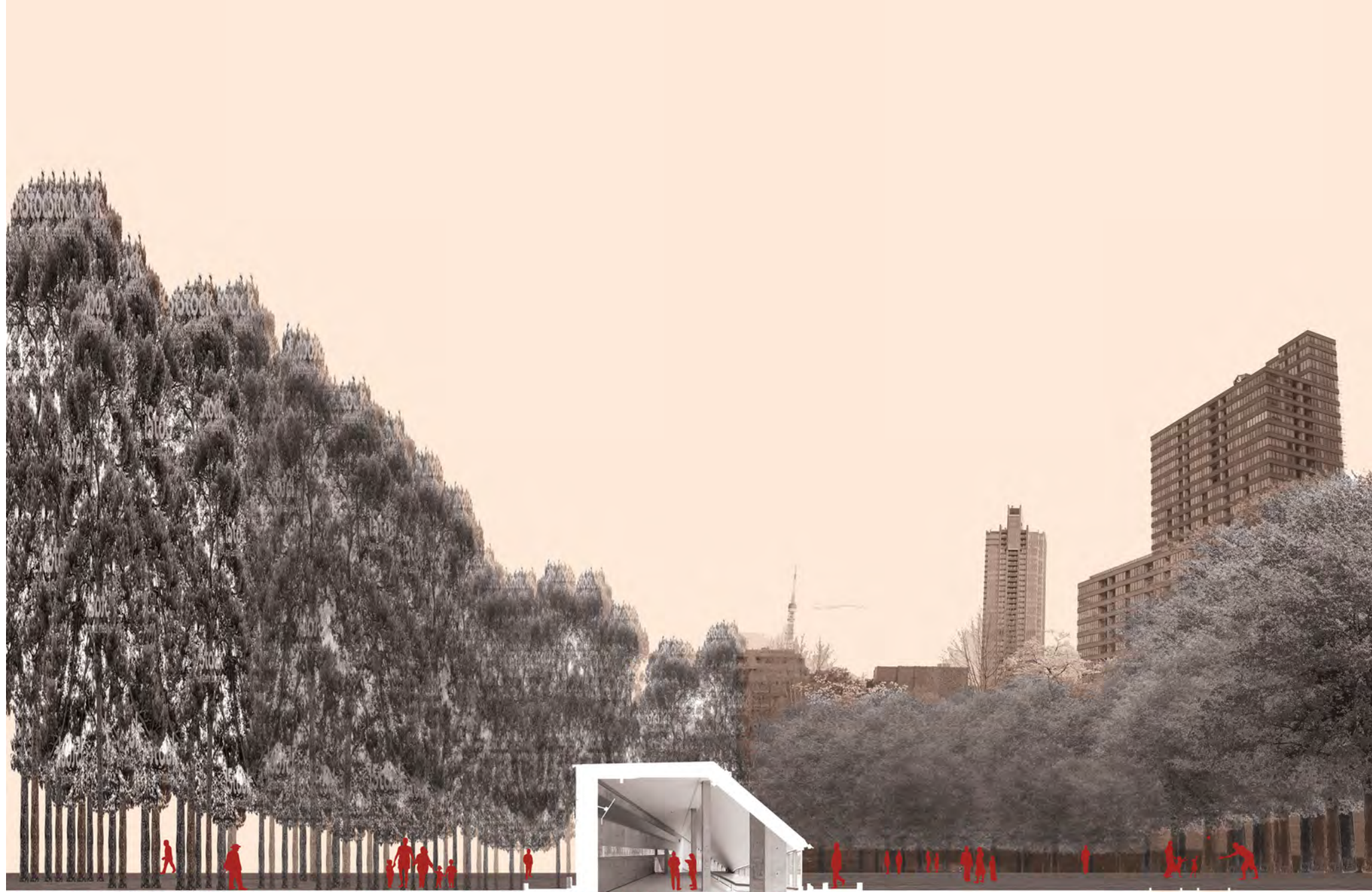
Drawing by Omar Dimiati



Saragaku in Daikanyama, Akihisu Hirata,

Drawing by: Mario Garcia





THE 21-21 DESIGN SITE BY TADAO ANDO. CONCEALS MOST OF THE VOLUME OF THE BUILDING UNDERGROUND. ONCE INSIDE, THE STRUCTURE OPENS UP AND REVEALS 2 SWEEPING GALLERIES. THE 21-21 DESIGN SITE SITS ATOP LAND SURROUNDED BY OPEN PUBLIC SPACE, AS SUCH THE AIM OF THE DESIGN WAS TO LEAVE THE NATURAL AREA IN WHICH IT IS SURROUNDED BY UNDISTURBED. THIS SECTION DEMONSTRATES HOW THE MUSEUM LEAVES THE PARK SPACE SEEMINGLY UNDISTURBED.

2121 Design Sight, Tadao Ando

Drawn by: Nicolas Paladines



2121 Design Sight, Tadao Ando

Drawn by: Lorena Catalano