

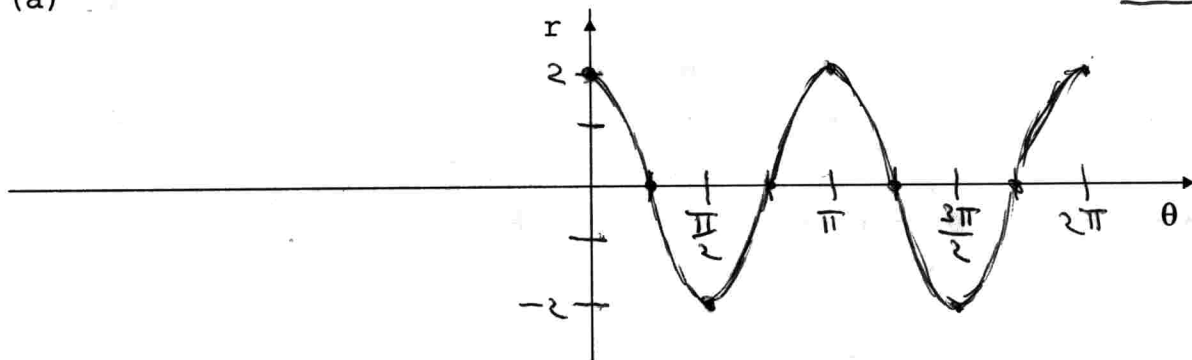
3. (15 pts.) Sketch the given curve in polar coordinates. Do this as follows: (a) Carefully sketch the auxiliary curve, a rectangular graph on the coordinate system provided. (b) Then translate this graph to the polar one.

Equation: $r = 2 \cdot \cos(2\theta)$

period = π

tr-t4g3.pdf

(a)



(b)

